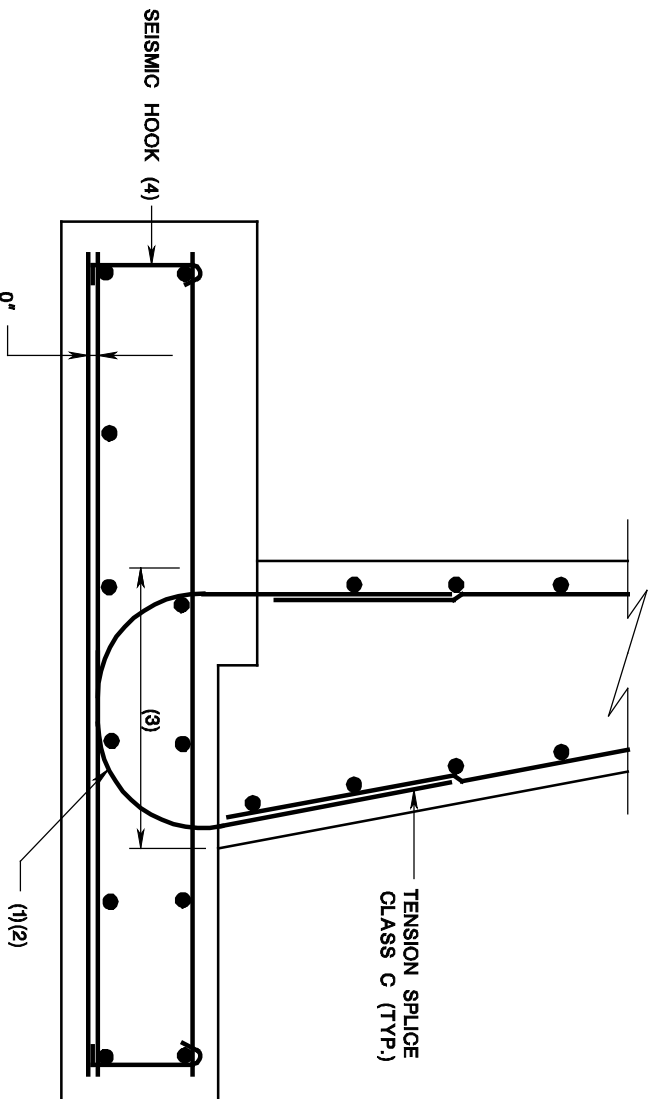


ALTERNATE DOWEL DETAIL

ISSUED: 2009

PLATE
3.4-4



1. DOWEL CONFIGURATION SHALL BE THE SAME FOR ALL BRIDGES IN A CONTRACT.
2. CORROSION PROTECTED DOWELS SHALL BE USED IN SALT WATER ENVIRONMENTS.
3. TRANSVERSE STEEL IN TOP OF FOOTING SHALL BE DEVELOPED IN TENSION.
4. IN THE EVENT THAT SEISMIC FORCES GOVERN THE DESIGN OF THE FOOTING, #3 SIZE VERTICAL STIRRUPS WITH ALTERNATED 135° HOOKS AT ONE END AND 90° HOOKS AT THE OTHER END SHALL BE USED TO CONNECT THE TOP AND BOTTOM REINFORCEMENT MATS. SPACING SHALL BE A MINIMUM OF 48 INCHES.